

Friends of the Dog Parks, Inc.
(a 501(c)3 non-profit, all volunteer organization)
Lincoln, Nebraska



Friends
of the
Dog Parks
Lincoln, Nebraska



Check Out Our New Website:

www.LincolnDogParks.Org



Officers and Board Members

- Officers

- Jordan Brasch, President
- Lyle Hansen, Vice President
- Mike Wensel, Treasurer
- Kelly Hansen, Secretary

- Board Members

- Peggy Neemann, Past President
- Annette Campbell
- Judith Andre
- Kris Brambila, Social Media Director
- Clay Witte

Mission Statement:

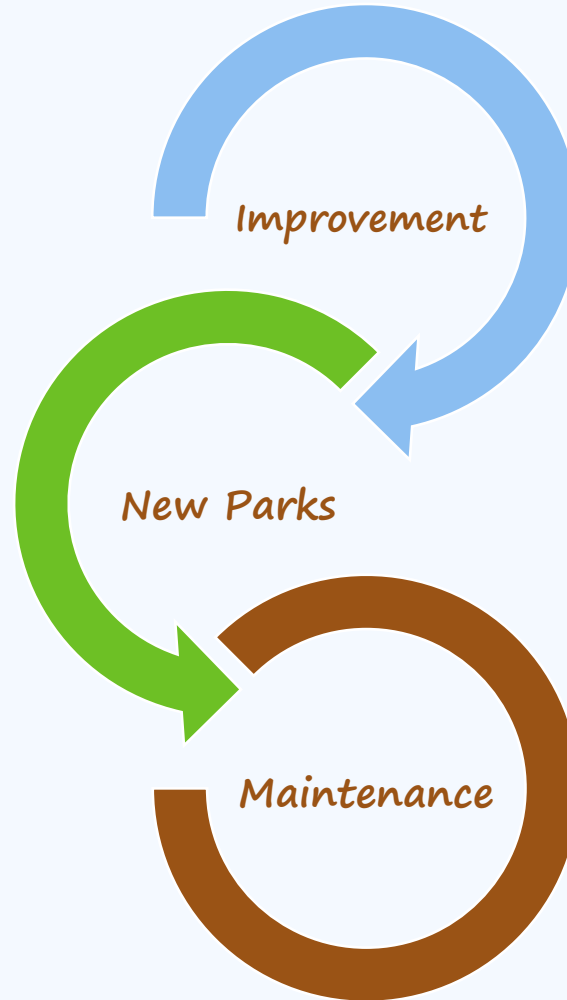
Friends of the Dog Parks promotes
the creation and improvement of
off-leash parks in Lincoln, NE

How We Work:

Friends of the Dog Parks:

Actively works in conjunction with: individuals, businesses, and city officials to implement short-, mid-, and long-term goals to promote, create, and improve off-leash parks as well as the off-leash park experience in Lincoln, Nebraska.

Our Priorities



Presentation Outline

Benefits of good dog parks



Goals to accomplish our mission



Support needed to achieve our goals

Why Are Dog Parks Important?

- ✓ *FACT: Everybody benefits from dog parks.*
- ✓ *FACT: Dog Parks are the most used parks in Lincoln.*
- ✓ *FACT: It's estimated that 1 in 6 households in Lincoln, Nebraska has a dog.
THAT'S OVER 40, 000 REGISTERED DOGS!!*
- ✓ *FACT: That number increases every year.*





Dog Parks Benefit Everyone!!!



- Off-leash parks create a sense of community, forging friendships and breaking the ice between strangers.
- Off-leash parks add open space, beauty, and livability to urban and densely populated areas.
- Off-leash parks benefit apartment dwellers and homeowners with small or unfenced yards.
- Off-leash parks strengthen the bond between owners and their dogs. Improving that relationship makes it less likely that the dog will experience behavioral issues which may lead the owner to surrender their pet to a shelter.
- Off-leash parks have become a sought-after amenity among people relocating to the community.

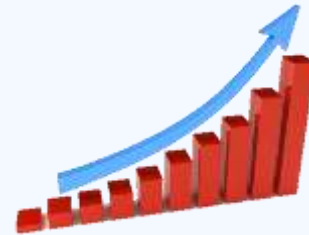


FOTDP Long-Term Goals

- *Develop a total of 5 Off-Leash parks in Lincoln, NE;
One in each quadrant of the city: NW, NE, SW, SE and City Center.
Assumes relocating the existing Oak Creek Dog Run*
- *Give each park appropriate facilities based on its;
Location, size, use, natural features, etc..*
- *Increase public awareness and participation.*

FOTDP Long-Term Goals cont'd

- Turn our goals into public-private projects driven by input from citizens and park users.
- Raise private funds from grants, donors, “check-offs” and events.
- 10-year timeline for completion.





Oak Creek Dog Run



Clay Witte, Ambassador

Oak Creek Short-Term Goals:

- Spring Clean-up Day
- Additional bag dispensers and trash cans (FOTDP)
- Painting of bag dispensers and trash cans (FOTDP)
- Relocate the current billboard to a higher-visibility area and repaint it (LPR and FOTDP)
- Obtain traffic count



Oak Creek Mid-Term Goals:

- Fencing: 
 - Fence off the creek in the NW section OR create a small dog area (LPR)
- Fill depressed areas and cover exposed debris (LPR)
- Install donation box (LPR and FOTDP)
- Painting projects (LPR and FOTDP) 
- Porta-Potty (LPR and FOTDP)

Oak Creek Spring Clean-up: *Spring Cleaning*

Date: April 11th, 2015
Saturday from 8am – 2pm

• GOALS

- Pick up waste & trash
- Stock bag dispensers
- Identify Hazards
- Clean outside the fence on the north-central side

SIGN-UP WITH Clay Witte

cwitte@neb.rr.com

Volunteers and Supplies that are needed

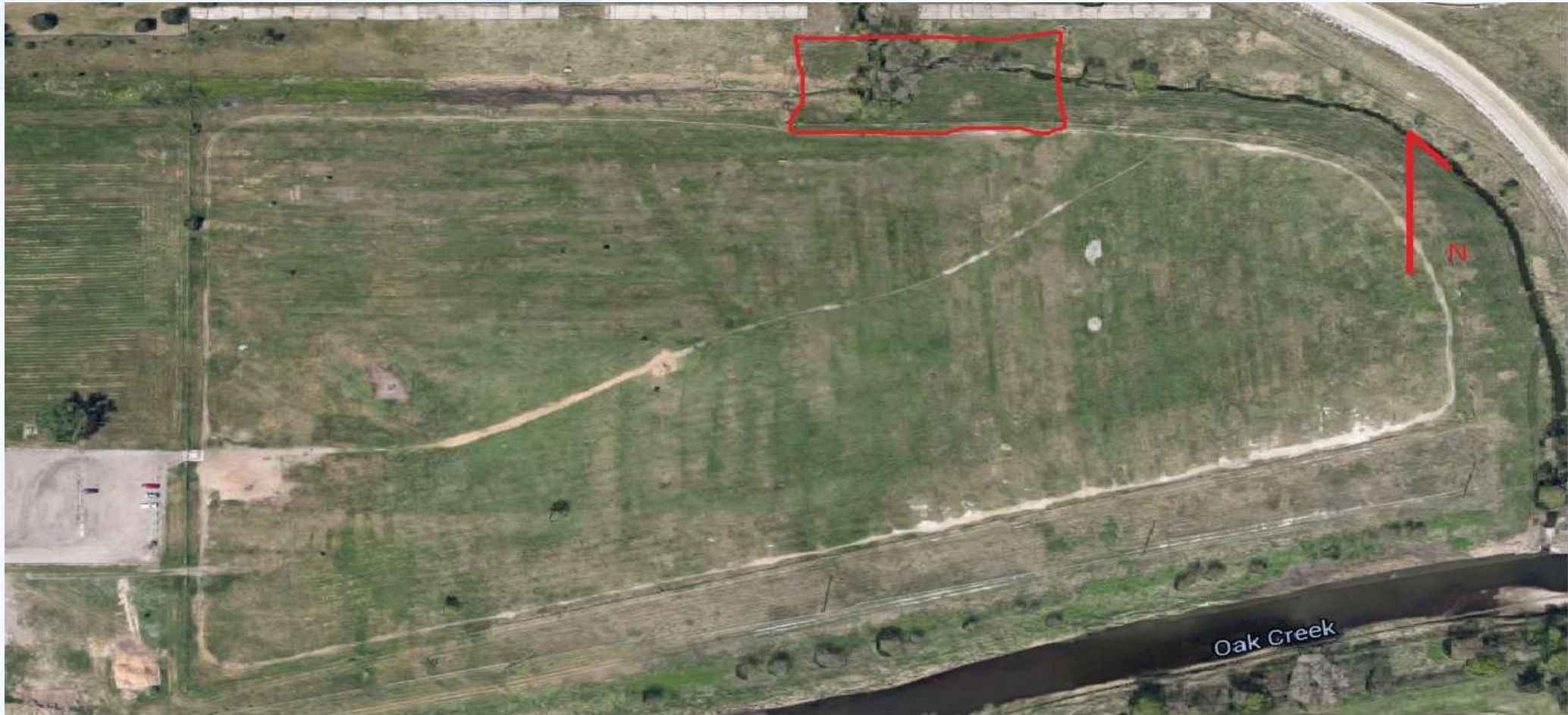
- 10 + Volunteers

• Supplies needed:

- Wheelbarrows/Carts
- 5 gallon buckets
- Rakes/Shovels
- Gloves
- Trash bags



Oak Creek Spring Clean-up: Focus Area



Red line indicates area outside the fence with large trash build up.

Goal of an additional 6-8 bag dispensers to be installed at Oak Creek.



Rickman's Run

Lyle Hansen, Ambassador



Rickman's Run (Holmes) Short-Term Goals:

- Spring Clean-up Day
- Additional bag dispensers and trash cans (FOTDP)
- Painting of bag dispensers and billboard(FOTDP)
- Obtain traffic count



Rickman's Run (Holmes) Mid-Term Goals:

- Wood chip and/or additional gravel paths (LPR)
- Remove or trim black netting tripping hazards(LPR)
- Install donation box (LPR and FOTDP)
- Painting projects (LPR and FOTDP)



Rickman's Run Spring Clean-up: *Spring Cleaning*

Date: April 18th, 2015
Saturday from 8am – 2pm

• GOALS

- Pick up waste & trash
- Stock bag dispensers
- Identify Hazards

SIGN-UP WITH Lyle Hansen

lrhansen90@gmail.com

Volunteers and Supplies
that are needed

- 10 + Volunteers
- Supplies needed:

- Wheelbarrows/Carts
- 5 gallon buckets
- Rakes/Shovels
- Gloves
- Trash bags



Goal of an additional 12-16 bag dispensers to be installed at Rickman's Run.



Painting Projects at Both Off-Leash Parks



Oak Creek Dog Run: Projected for May 2015
Trash Cans/Bag Dispensers
Billboard/Kiosk

Contact: Clay Witte @ cwitte@neb.rr.com



Rickman's Run: Projected for May 2015
Bag Dispensers
Billboard/Kiosk

Contact: Lyle Hansen @ lrhansen90@gmail.com



Dog Run Survey



- Show the city your support for more and better off-leash parks in Lincoln
- Contribute your ideas for improving our off-leash parks
- Find a link to the survey on our website or on our Facebook page.
 - www.lincolndogparks.org
 - www.lincoln.mindmixer.com
- Submit your survey by April 10th

Make Your Voice Heard!!!

What is your grand vision of the perfect off-leash park?



- Submit your Dog Park Survey by April 10th, 2015
- Go to the FOTDP website or the Parks & Rec website -
... then watch for additional surveys to follow!

www.lincolndogparks.org or www.lincoln.ne.gov/city/parks

GIVE on “Give to Lincoln Day” May 28th!

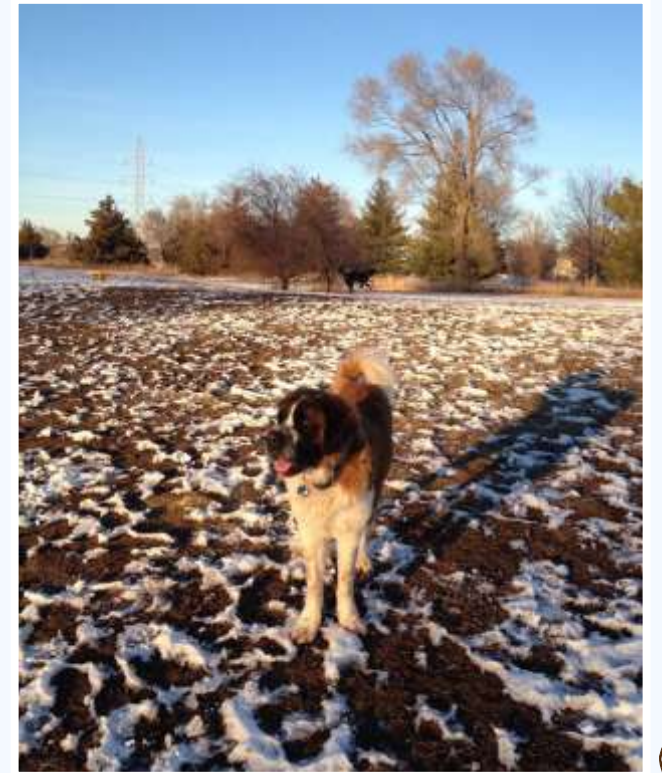
- On May 28th ONLY, the Lincoln community will come together for 24 hours of giving from 12:00 am to 11:59 pm.
- Give to improve your dog parks.
- Every donation is eligible to receive a proportional share of a \$300,000 match pool!
- Make your gifts online at www.givetolincoln.razzo.com
- Donations can be setup to be scheduled on the Give to Lincoln website as early as May 1st.
- Donations made in person during regular business hours at the Lincoln Community Foundation, 215 Centennial Mall.

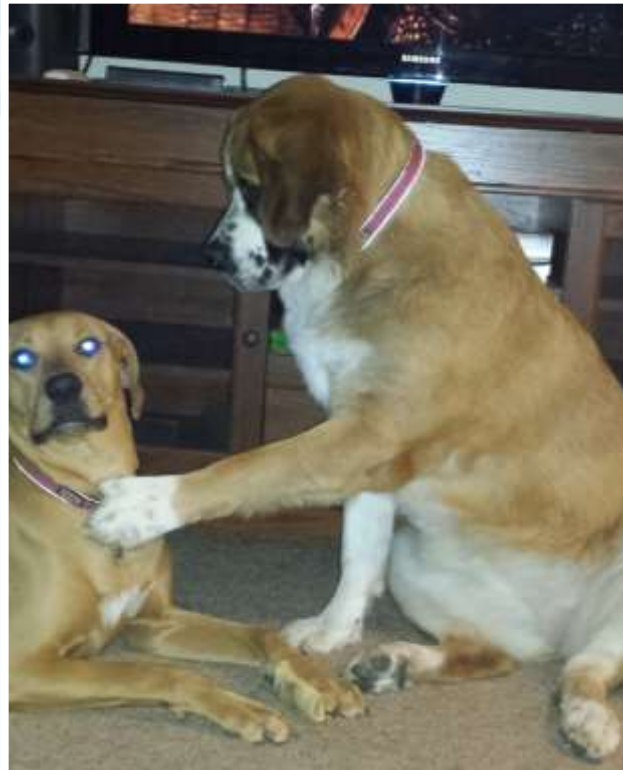
The “Bottom Line”

We need your help, so get involved!

- Sign up for our email list
- Visit us on Facebook (Friends of the Dog Parks, Inc)
- Learn more at our website www.LincolnDogParks.org









THE END!!

